



GGP RESPONSE

EXTENDING THE REACH OF
GAZETTEER MANAGEMENT
AND SPATIAL INTELLIGENCE
FOR THE EMERGENCY SERVICES

GGP RESPONSE - AT THE HEART OF COMMUNITY SAFETY

GGP RESPONSE

EXTENDING THE REACH OF GAZETTEER MANAGEMENT AND SPATIAL INTELLIGENCE FOR THE EMERGENCY SERVICES

Emergency services and other organisations involved in community safety and civil contingency response are under increased pressure to improve back office efficiency and frontline operational performance.

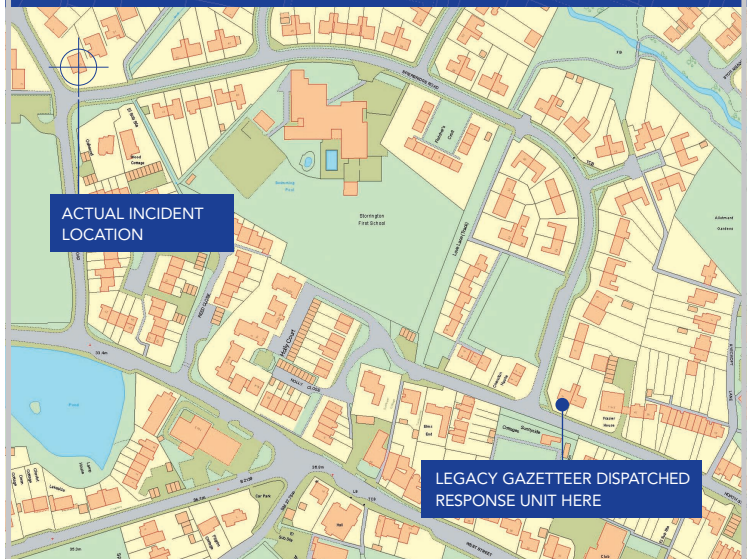
Central to these challenges is the ability to access comprehensive and accurate decision support information such as land and property data and associated spatial intelligence. As a result, many organisations are turning to the National Land and Property Gazetteer (NLPG) to enable a common base dataset and referencing system.



The NLPG is the definitive national address list that provides unique identification of land and property data and conforms to BS7666.

Access to a comprehensive and consistent gazetteer of places, streets and properties is essential to support back office analysis and front line incident response. The inability to promptly identify a location or verify risk information in the event of an emergency can often lead to confusion or even frustration when dealing with disparate data sources. This can lead to serious consequences, particularly when lives are at risk and every second counts. Getting to the right location as fast as possible is no easy task and the ability to act on your back office data with confidence is vital.

< INCIDENT LOCATION DISCREPANCY OF 1.2 MILES >



THE ABILITY TO ACT ON YOUR BACK OFFICE DATA WITH CONFIDENCE IS VITAL, PARTICULARLY WHEN LIVES ARE AT RISK AND EVERY SECOND COUNTS.



GGP RESPONSE THE SOLUTION OF CHOICE

By working in consultation with emergency services GGP have developed a total gazetteer management and spatial intelligence solution based around a core NLPG dataset that extends the reach of your current back office systems. GGP Response is built around GGP NGz, our award winning NLPG solution, coupled with GGP GIS and a suite of fully integrated desktop and web-based applications.



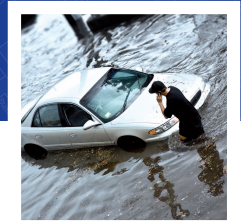
KEY BENEFITS AT A GLANCE

GGP Response addresses many of the inefficiencies associated with incompatible datasets and disparate systems by consolidating your back office information to enable cross border data sharing and more informed decision making. Property inspection, risk analysis, scenario planning and resource mobilisation are just a few of the tasks that can be facilitated with ease using GGP Response.

- ⊕ A single integrated suite of desktop and web based applications
- ⊕ Comprehensive and accurate decision support information
- ⊕ Confidence in data by front line operations staff and back office analysts
- ⊕ Increased efficiency and cost saving by removing duplication of effort
- ⊕ Effective back office analysis and frontline service performance
- ⊕ Conforms to government directives and national data standards

Adopting GGP Response as your corporate data solution provides you with the ability to add intelligence at a local level, enabling active contribution to the NLPG, whilst supporting local cooperation through data sharing. More regular and intensive use of NLPG in this way will increase the volume of change, facilitating continuous improvement in the quality and completeness of a national dataset.

Since 1992 we have worked in partnership with over 100 local government and public sector bodies to deliver corporate GIS and NLPG solutions that deliver measurable performance benefits. We were the first company to have our NLPG gazetteer management solution accredited to BS7666 and the first major supplier to migrate all of our customers to DTF 7.3.

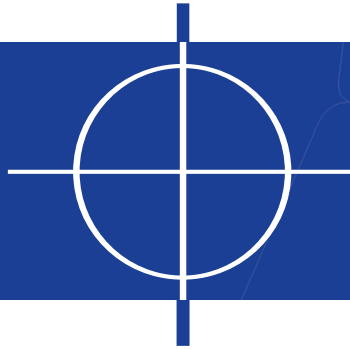


“GGP Response gives us the tools we need to manage our data on a day to day basis plus the support and confidence we need to roll out our database so it becomes a truly corporate resource”.

Nicola Smith,
Business Information Manager,
Cambridgeshire Fire and
Rescue Service.



GGP RESPONSE



GGP RESPONSE PRODUCT SUITE

The GGP Response product suite is built around a core NLPG gazetteer and GIS solution, with many supporting applications, offering a comprehensive and robust system to meet your corporate data needs. To complement our solutions we also offer a complete range of services including consultancy, implementation, project management, application customisation, training and support.



WHY GGP SYSTEMS IS THE SUPPLIER OF CHOICE FOR THE EMERGENCY SERVICES

- ⊕ Our 17 years of success in delivering GIS and NLPG solutions to over 100 local government and other public sector bodies has gained us an enviable reputation.
- ⊕ Our in-depth understanding of public sector needs and a new generation of integrated and web-based services enable us to develop solutions that deliver measurable performance benefits.
- ⊕ Our solutions underpin transformational government initiatives and conform to national data standards.
- ⊕ Our customer support is continuously assessed to ensure the highest levels of service, benchmarked for promptness, knowledge, individualised attention and problem solving.
- ⊕ Our philosophy is to become a valuable and trusted partner with our clients and our aim is to ensure that your investment is one of immediate and future benefit.



GGP Systems Ltd
Suite 33 AMP House
Dingwall Road
Croydon, CR0 2LX

Tel/Fax: (020) 8686 9887

Email: sales@ggpsystems.co.uk

www.ggpsystems.co.uk

GGP RESPONSE
THE SOLUTION OF CHOICE
FOR THE RIGHT RESULT.



nlpg 2006 compliant